

# Wolke m600<sup>®</sup> touch

Small Character Thermal Ink Jet Printer

## Ink Jet.

Laser.

Thermal Transfer.

Labelers.

Track & Trace.

Supplies.

Parts & Service.



The Wolke m600 touch ink jet printer offers an unparalleled combination of functionality and simplicity in one printer. Designed to address the needs of Life Science and industrial users, the m600 touch is the ideal coding and marking solution for a range of applications, from serialization to simple date and lot coding.

## Consistent, high quality print

- High resolution print (up to 600 dpi) suitable for machine vision inspection
- Wide range of bar codes including DataMatrix and stacked symbologies
- Can drive up to four printheads independently or together

## Integration flexibility

- Advanced communications protocol for remote operation and high speed serialization
- Webserver functionality and four printhead designs to aid line and machine integration

## Simple to operate

- Intuitive, graphical user interface with easy to learn icon-based controls
- All common operations accessed in five or fewer touches
- Clean, no mess operation

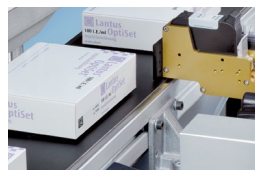
## Designed to prevent coding errors

- Template creation software with rules-based message fields
- Color touch screen with WYSIWYG image display reduces set up errors
- Optional USB scanner for message selection

## Low cost of ownership

- Solid state electronics with no moving parts
- No wear items or replacement parts outside of ink jet cartridge replacement

**VIDEOJET**  
Uptime Peace of Mind<sup>®</sup>



**wolke**  
Inks & Printers

## Select Product Specifications

### Line Speed / Resolution Capability

Maximum resolution of 600x600 dpi  
5-250 fpm (1.5-75 mpm) at 600x240 dpi  
*Higher line speeds are possible at lower horizontal print resolutions*

### Printing Capabilities

Full downloadable font support using TrueType® fonts  
Fixed, variable and merged text fields  
Flexible date/time and shift code formats  
Auto best before date calculations  
Auto incrementing/decrementing text and counters  
Multiple graphic formats supported (up to maximum print area)

### Bar Codes

EAN8, EAN13, UPC-A/E, CODE 39, CODE128, EAN128, GS1 DataBar (including 2D composite), DataMatrix, QR, PDF417

### Print Cartridge

Maximum of four 12.7mm tall, 600 dpi print cartridges (stacked/stitched or deployed independently)

### Display

8.4-inch TFT SVGA (800x800) full-color LCD and touch screen  
WYSIWYG print preview  
Full on-board diagnostics  
Three levels of password protection or advanced configurable password protection  
Extensive language support (22 in total)

### Data Interface

RS232, Ethernet, USB memory stick support, Text Communications Protocols

### Controller Dimensions

9.6" (244 mm) long  
3.6" (92 mm) wide  
6.7" (170 mm) high

*Dimensions exclude printhead, accessory cables and power supply connections*

### Printhead Dimensions

Four printhead options are available with different dimensions to meet line integration requirements. The following dimensions are for the Standard Blue printhead:

4.5" (115 mm) long  
4.3" (110 mm) high  
2.4" (60 mm) wide (at rub plate)

*Dimensions exclude cartridge and cable connections*

*Red, Green, and Gold printhead dimensions vary in length and height from Blue printhead*

### Temperature Range

41°F to 113°F (5°C to 45°C)

### Electrical Requirements

100-240 VAC 50/60Hz

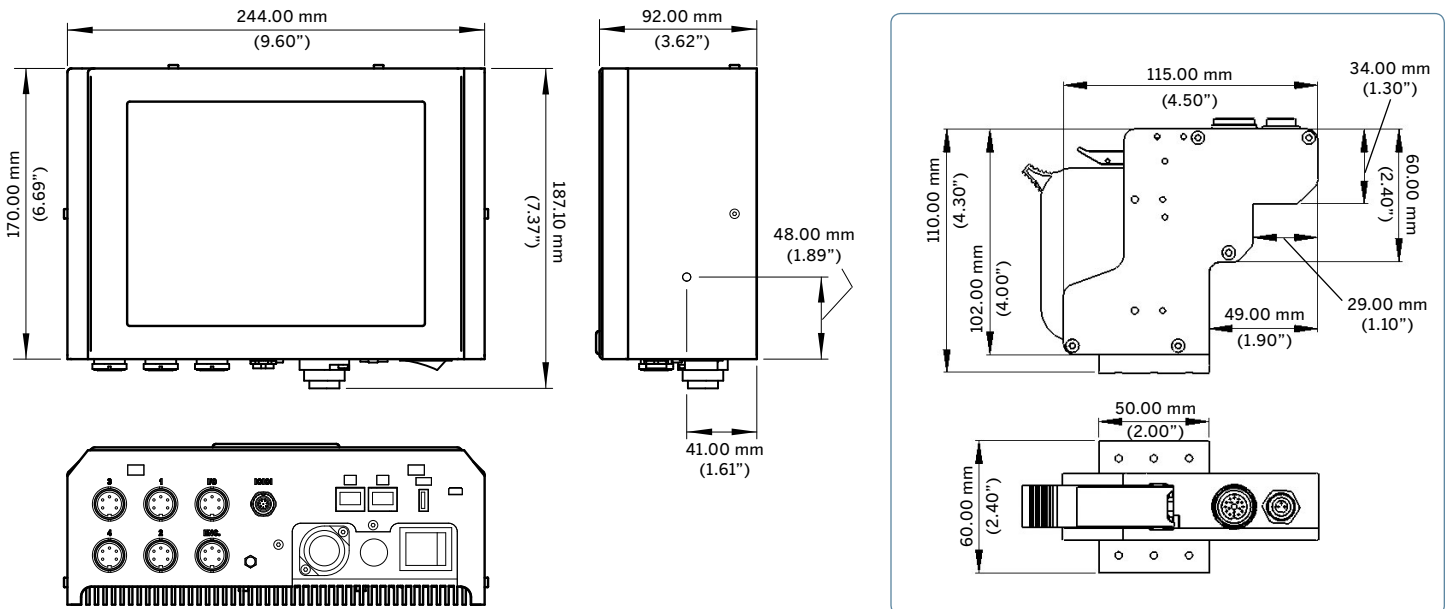
### Approximate Weight (Controller)

7.0 lbs (3.2 kgs)

CERTIFIED  
ISO 9001  
DOCUMENTED QUALITY



## Dimensions



Standard Blue Printhead



800-843-3610 / [www.videojet.com](http://www.videojet.com) / [info@videojet.com](mailto:info@videojet.com)

Videojet Technologies Inc. / 1500 Mittel Blvd. / Wood Dale IL 60191-1073 / USA

Phone 630-860-7300 Fax 800-582-1343