

New Marking Laser L-Box



Performances

- Marking on all type of material
- Surface or hollow marking
- Standard 1D (bar codes) and 2D (Data Matrix) code capability
- Marking high definition logos and images
- High quality marking
- Deep marking

Security

- Class 1 security on box closure (EN 60825-1 standard)

User-friendly

- Ergonomic door: soft opening
- Access the marking zone from 3 sides with height of 200mm / 7.9 inches
- Large viewing window
- Reduced width

Robust and reliable

- Component extended life expectancy > 100 000 h
- Maintenance free
- Warranty up to 5 years

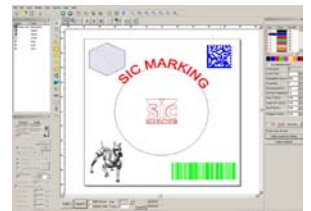
Fiber laser

- Pulsed Ytterbium fiber laser source
- Fiber source of 10, 20, 50 W
- Fast marking of high quality

FIBER UNIT & SOFTWARE INTERFACE: SIC LASER PC



- User friendly Windows interface
- USB connection with the control rack "FIBER UNIT"
- Production use mode
- Advance use mode
- Marking of Standard 1D (bar codes) and 2D (Data Matrix), all "tff" fonts, images
- Database functions integrated



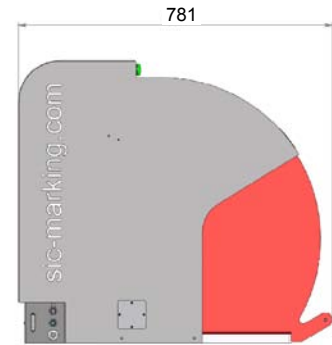
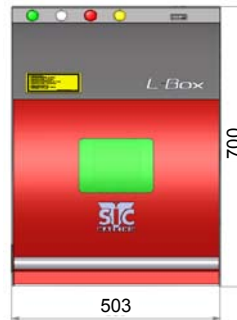
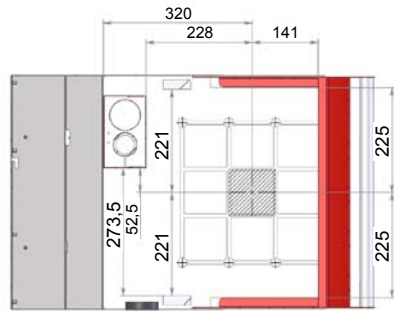
MARKING SAMPLES



LASER TECHNICAL FEATURES

L-Box

Marking window	100 x 100 mm / 3.9 inches (option 170 x 170 mm / 6.7 inches)
External dimensions	503 x 781 x 700 mm / 19.8 x 30.7 x 27.6 inches
Marked parts dimension	Maximal height: 235 mm / 9.3 inches Maximal length: 440 mm / 17.3 inches
Lighting	LED lighting of the marking field
Adjustable working distance	Manual or power-operated column with counter and laser dots



NEW LASER SPECIFICATIONS



Wide opening on 3 sides :

- Ergonomic: Visibility and easy access
- Possibility to mark high dimension parts, length > 500mm / 19.7 inches

⚠ (Trained employees and protective equipment required)

T-grooved working table :

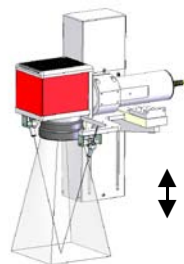
- Working area of 369 x 500mm / 14.5 x 19.7 inches



OPTIONS



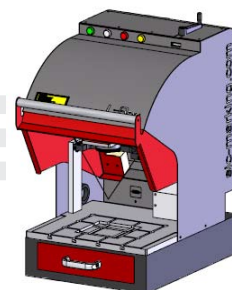
Chassis for integration of the station components



Z axis power-operated column



Swing plate



Parts loading drawer



Fume extraction system



Rotary (D)



Bar-code and Data Matrix reader



SIC Marking®

13, route de Limonest
Zac de la Braille
69380 Lissieu - France
Tél. : +33 (0)4 72 54 80 00
Fax : +33 (0)4 78 47 39 40
www.sic-marking.com
info@sic-marking.com

